

WHAT IS VITRECTOMY EYE SURGERY?

Vitreotomy is a surgical procedure that removes the vitreous in the central cavity of the eyeball so that the troubled retina can be operated on and vision can be restored.

Why is vitrectomy eye surgery necessary?

A vitrectomy is necessary mainly for:

1. Retinal Detachment
2. Macular hole
3. Epiretinal membrane

Who are at risk of these surgical retinal diseases?

1. High risk group:
 - a. Seeing floaters
 - b. Short-sightedness
 - c. Seeing flashes of light
2. When your Amsler chart testing shows distorted lines or shadow.



WHY CHOOSE OPTIMAX



Experience

Since 1995, we are among the professionals to perform Lasik in Malaysia. Today, we boast over 90,000 satisfied clients.



Modern Technology

From diagnosis equipment to sophisticated laser engineering, modern technologies are used.



Total Convenience

With a comprehensive network covering most cities in Malaysia, customers can keep in touch with us more easily.



ISO Certified

We are a corporation in Malaysia providing world-class Lasik services that fulfil stringent ISO requirements.



Trusted Team of Professionals

We are occupied with a resident multi-specialty Ophthalmologist, practicing Optometrist, Vision Consultant, Nurses and Laser Engineer.



Life Time Warranty

Our Vision For Life program warrants your Lasik vision for a lifetime.*



HPMRS

All our Lasik procedures achieved results of 99% in functional visual acuity and 100% in safety tests audited by the Healthcare Performance Measurement Report System (HPMRS).**

*Terms and conditions apply
**Audited by third party

OPTIMAX EYE SPECIALIST

New Vision New Life™

OPTIMAX EYE SPECIALIST CENTRE SDN BHD
(329776-D)

TAMAN TUN DR. ISMAIL (HQ)

Unit 2-2-1, Bangunan AHP, Jalan Tun Mohd Fuad 3,
Taman Tun Dr Ismail, 60000 Kuala Lumpur.
Tel: 03-7722 3177 / 03-7728 3177

KLANG	+603-3323 7742
SHAH ALAM	+603-5510 2535
SUNWAY	+603-5621 3388
SRI PETALING	+603-9057 7300
SEREMBAN	+606-761 0900
JOHOR	+607-295 2522
KUCHING	+6082-579 085

OPTIMAX EYE SPECIALIST HOSPITAL

OPTIMAX EYE SPECIALIST HOSPITAL (PENANG)

223, Jalan Masjid Negeri, 11600 Penang.
Tel: +604-282 3522 Fax: +604-281 2492
Email: penang@optimax.com.my

Find us at:

www.optimax2u.com
Toll Free: 1800 88 1201



OPTIMAX EYE SPECIALIST

New Vision New Life™

Vitreotomy Eye Surgery 眼睛玻璃晶体手术

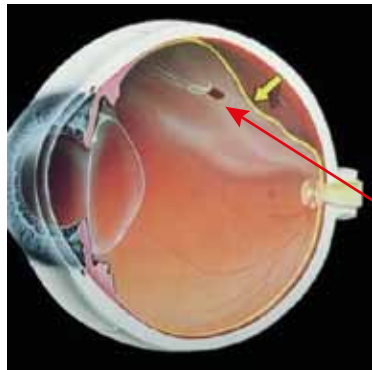


DISCLAIMER: The information in this brochure is not intended to be a substitute for professional medical advice, diagnosis or treatment. All content, including text, graphics, images and information is for general information purposes only. If you have persistent vision health problems or if you have further questions, please consult our ophthalmologists.

For internal distributions only.

1. Retinal detachment 视网膜脱落

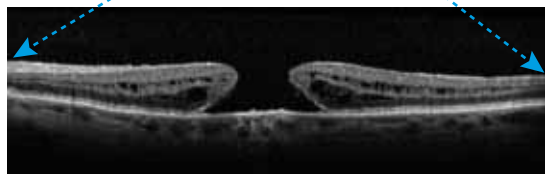
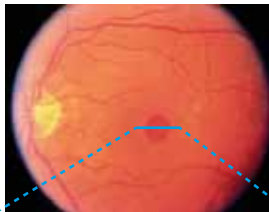
Retinal detachment occurs when there is a retinal tear causing the retina to separate from the wall of the eye. If not treated early, retinal detachment may lead to partial or complete loss of vision.



The water seeps through the break and slowly lifting the retina off the wall

2. Macular hole 黄斑裂孔

A macular hole is a round, full thickness break right at the centre of the macula. When this defect occurs, central vision will be affected.

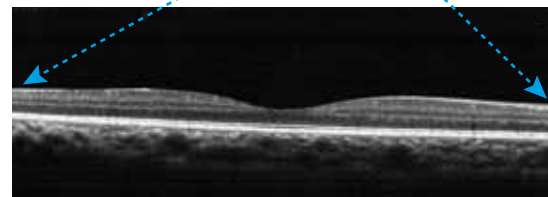
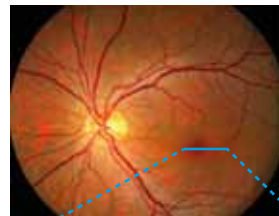


OCT scan showed full thickness macular hole

3. Epiretinal membrane 视网膜前膜

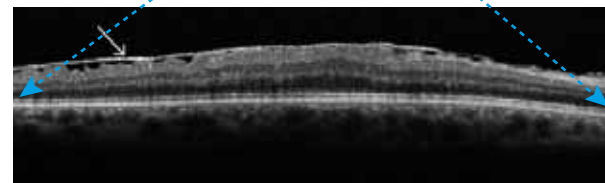
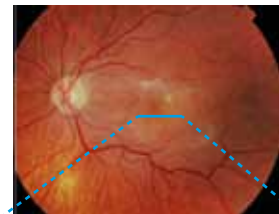
Epiretinal membrane is a layer of scar tissue growing on the surface of macula due to mostly unknown reason. A third of the time, this membrane will slowly contract, and cause distorted images and blurred vision.

Normal Macula



OCT scan of normal macular

Epiretinal Membrane



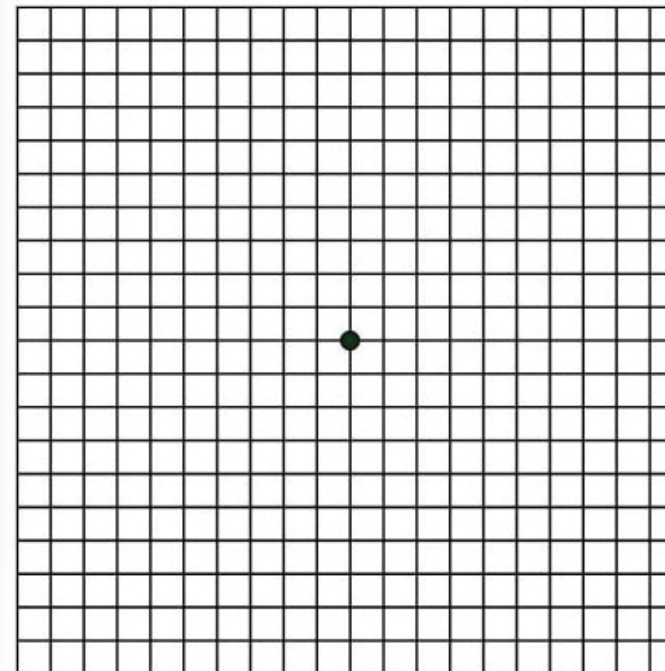
Epiretinal membrane (white arrow) contract and cause welling and distortion of retina.

What to expect during and after vitrectomy eye surgery?

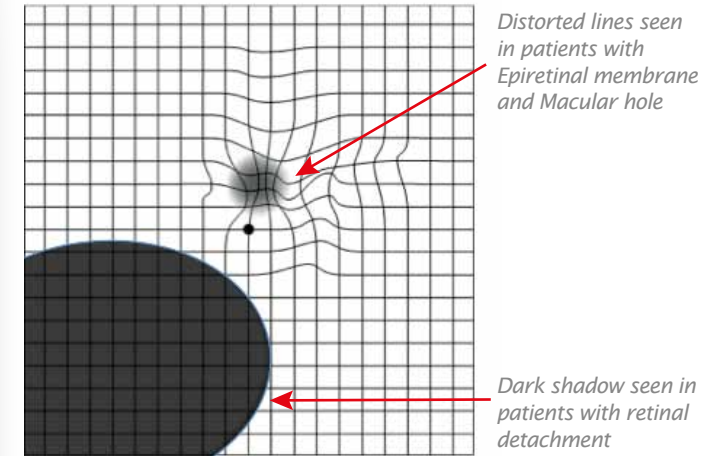
Vitrectomy is a day care surgery that normally lasted 60-90 minute. It doesn't require general anesthesia. Your eye will be numbed by small amount of anesthetic agent put around your eye without needle injection.

After the surgery, you will need to rest on the bed for 1-2 hours at certain head position. Your eye will be patched and the eye pad will be removed the next morning during check up.

Depending on type of retinal diseases, after the surgery, you may need to maintain certain head position for a period of 3-7 days, day and night. During day time, you can rest for 10 minute in every hour to resume to upright position.



Please cover one of your eyes in turn, look at the center of the chart with your uncovered eye, is the line appeared straight?



Distorted lines seen in patients with Epiretinal membrane and Macular hole

Dark shadow seen in patients with retinal detachment

Please consult your eye doctor if you have further question

Make an appointment with us to find out whether you are a candidate for Vitrectomy Eye Surgery! We are always ready to deliver a new vision, a new life. Contact us at **1800-88-1201** or email us at **hq@optimax.com.my**

