

WHAT IS Intravitreal Medicine Injection?

Intravitreal Medicine Injection (IVI) is a unique way of delivering medicine directly to the troubled center retina (macula) in the eye. Traditionally, eye drops and/or tablets forms of medicine were used. Studies had shown that they are less effective compare to IVI treatment for retinal diseases.

Why is IVI treatment necessary?

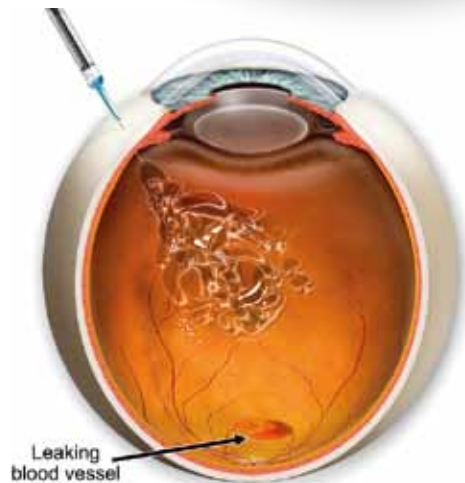
IVI treatment is necessary mainly for:

1. Diabetic Maculopathy
2. Retinal Vein Occlusion
3. Aged Macular Degeneration

Who are at risk of getting these retinal diseases?

High risk group:

- a. High blood pressure and cholesterol level
- b. Poor diabetes control
- c. Heavy smokers



WHY CHOOSE OPTIMAX



Experience

Since 1995, we are among the professionals to perform Lasik in Malaysia. Today, we boast over 90,000 satisfied clients.



Modern Technology

From diagnosis equipment to sophisticated laser engineering, modern technologies are used.



Total Convenience

With a comprehensive network covering most cities in Malaysia, customers can keep in touch with us more easily.



ISO Certified

We are a corporation in Malaysia providing world-class Lasik services that fulfil stringent ISO requirements.



Trusted Team of Professionals

We are occupied with a resident multi-specialty Ophthalmologist, practicing Optometrist, Vision Consultant, Nurses and Laser Engineer.



Life Time Warranty

Our Vision For Life program warrants your Lasik vision for a lifetime.*



HPMRS

All our Lasik procedures achieved results of 99% in functional visual acuity and 100% in safety tests audited by the Healthcare Performance Measurement Report System (HPMRS).**

*Terms and conditions apply

**Audited by third party

OPTIMAX
EYE SPECIALIST

New Vision New Life™

OPTIMAX EYE SPECIALIST CENTRE SDN BHD
(329776-D)

TAMAN TUN DR. ISMAIL (HQ)

Unit 2-2-1, Bangunan AHP, Jalan Tun Mohd Fuad 3,
Taman Tun Dr Ismail, 60000 Kuala Lumpur.
Tel: 03-7722 3177 / 03-7728 3177

KLANG	+603-3323 7742
SHAH ALAM	+603-5510 2535
SUNWAY	+603-5621 3388
SRI PETALING	+603-9057 7300
SEREMBAN	+606-761 0900
JOHOR	+607-295 2522
KUCHING	+6082-579 085

OPTIMAX
EYE SPECIALIST
HOSPITAL

OPTIMAX EYE SPECIALIST HOSPITAL (PENANG)

223, Jalan Masjid Negeri, 11600 Penang.
Tel: +604-282 3522 Fax: +604-281 2492
Email: penang@optimax.com.my

Find us at:

www.optimax2u.com
Toll Free: 1800 88 1201



DISCLAIMER: The information in this brochure is not intended to be a substitute for professional medical advice, diagnosis or treatment. All content, including text, graphics, images and information is for general information purposes only. If you have persistent vision health problems or if you have further questions, please consult our ophthalmologists.

For internal distributions only.

OPTIMAX
EYE SPECIALIST

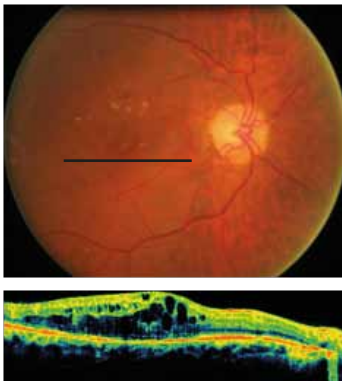
New Vision New Life™

Intravitreal Medicine Injection 眼睛玻璃晶体内注药治疗



1. Diabetic Maculopathy 糖尿病性黄斑病变

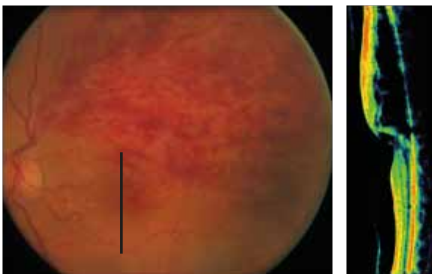
Diabetic maculopathy is a common eye complication among diabetes patients. The abnormal blood vessels appear at the center of eye and leak into retina and cause reduction of vision.



OCT scan across center of retina shows macular oedema

2. Retinal Vein Occlusion 视网膜静脉阻塞

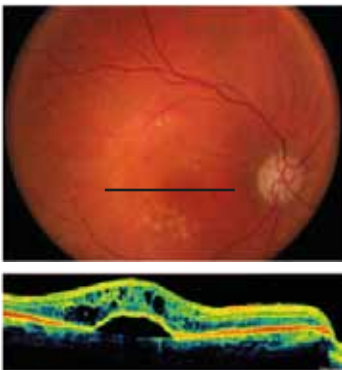
Retinal vein occlusion is also known as 'stroke in the eye'. It alarms us to improve our health to prevent future major stroke. Retinal vein occlusion itself can causes reduction of vision if macula is involved.



OCT scan in BRVO shows macular oedema

3. Aged Macular Degeneration 老年性黄斑病变

Aged macular degeneration is a condition normally affect senior citizen. It is due to aging changes in the eye. In the wet type, abnormal blood vessels grow into retina and bleed. It causes blurring of center vision.



OCT in AMD shows PED & intraretinal fluid



Picture on right shows central scotoma in patient with retinal diseases affecting macula.

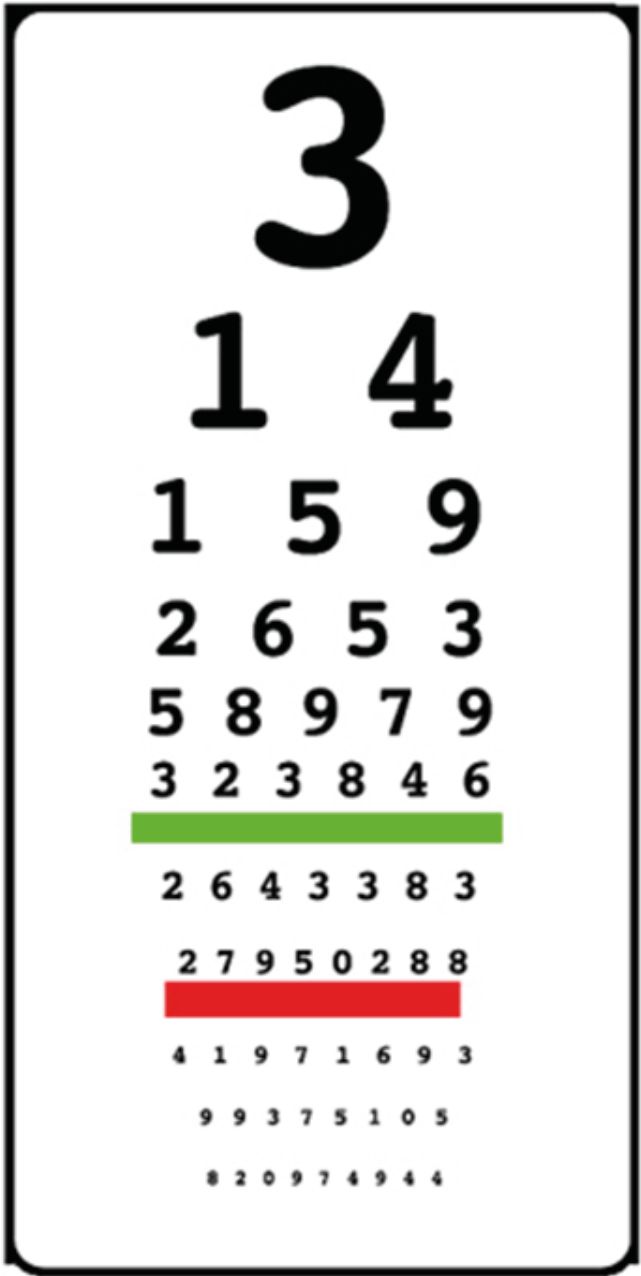
What to expect during and after Intravitreal Medicine Injection?

IVI treatment is normally done in operating theatre to eliminate the risk of infection. The procedure lasted less than 5 minutes. Your eye will be hold open and numbed with anesthetic agent. Small amount of medicine will be injected into the eye through the white part of the eye (sclera). Most of the patients do not experience pain during the injection.

After the IVI treatment, your eye will be patched for 2 hours. You will be given eye drop to use for a week. Some patient's eye will become red after the injection. The red eye is not dangerous and will disappear in 1-2 weeks time.



Make an appointment with us to find out whether you are a candidate for Intravitreal Medicine Injection! We are always ready to deliver a new vision, a new life. Contact us at **1800-88-1201** or email us at **hq@optimax.com.my**



Please cover one of your eyes in turn, can you read the numbers above the red line? Please consult your eye doctor if you have any concern.